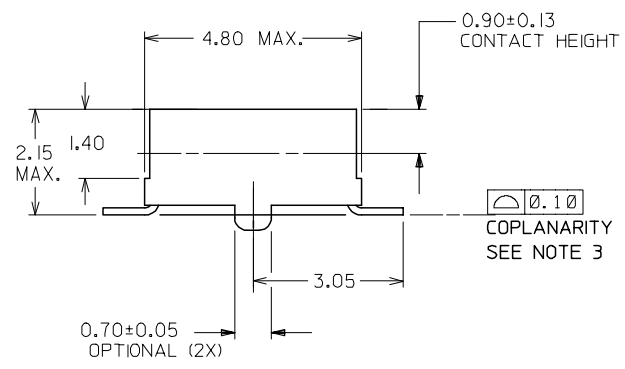


- NOTES:
- 12 CIRCUIT SIZE SHOWN FOR ILLUSTRATION ONLY. SEE CHART FOR AVAILABLE PART SIZES.
 - PLATING FINISH:
 - 1 - 0.76um/30uin MIN. GOLD IN CONTACT AREA
1.90um/75uin MIN. TIN/LEAD IN SOLDER TAIL AREA
BOTH OVER 1.30um/50uin MIN. NICKEL OVERALL
 - 2 - 0.38um/15uin MIN. GOLD IN CONTACT AREA
1.90um/75uin MIN. TIN/LEAD IN SOLDER TAIL AREA
BOTH OVER 1.30um/50uin MIN. NICKEL OVERALL
 - 3 - 0.76um/30uin MIN. GOLD IN CONTACT AREA
1.90um/75uin MIN. TIN IN SOLDER TAIL AREA
BOTH OVER 1.30um/50uin MIN. NICKEL OVERALL
 - 4 - 0.38um/15uin MIN. GOLD IN CONTACT AREA
1.90um/75uin MIN. TIN IN SOLDER TAIL AREA
BOTH OVER 1.30um/50uin MIN. NICKEL OVERALL
 - COPLANARITY OF SOLDER TAIL IS TO BE MEASURED BY RESTING THE PART ON A FLAT GAUGE SURFACE.
 - PRODUCT SPECIFICATION PS-87340 APPLIES.
 - THIS AREA OF PART TO BE HEAT STAKED TO RETAIN CONTACTS.
 - PART IS MATEABLE TO ALL MILLI-GRID HEADERS WITH MINIMUM PIN LENGTHS OF 1.90mm FOR TOP ENTRY.

| PART NO. IN TUBE | CKT. SIZE | DIM. B | DIM. A |
|------------------|-----------|--------|--------|
| 87340-04** | 4 | 2.00 | 4.00 |
| 87340-06** | 6 | 4.00 | 6.00 |
| 87340-08** | 8 | 6.00 | 8.00 |
| 87340-10** | 10 | 8.00 | 10.00 |
| 87340-12** | 12 | 10.00 | 12.00 |
| 87340-14** | 14 | 12.00 | 14.00 |
| 87340-16** | 16 | 14.00 | 16.00 |
| 87340-18** | 18 | 16.00 | 18.00 |
| 87340-20** | 20 | 18.00 | 20.00 |



PART NO. LEGEND

87340 - * * * *

CIRCUIT SIZE | PLATING

- 1 - WITHOUT LOCATING PEGS (HOUSING - BLACK)
- 2 - WITH LOCATING PEGS (HOUSING - BLACK)
- 3 (SEE NOTE 2)
- 4 - WITHOUT LOCATING PEGS (HOUSING - NATURAL)
- 5 - WITH LOCATING PEGS (HOUSING - NATURAL)

PDR No.: S-001004-00-00
 EC NO: S2006-0170
 DRWN: LUI/AO 2005/08/30
 CHKD: BOKOK 2005/08/30
 APPR: PTL/IM 2005/09/08

QUALITY SYMBOLS
 ▽=0
 ▽=0

| GENERAL TOLERANCES (UNLESS SPECIFIED) | |
|---------------------------------------|------|
| mm | INCH |
| 4 PLACES ±--- | ±--- |
| 3 PLACES ±--- | ±--- |
| 2 PLACES ±0.20 | ±--- |
| 1 PLACE ±--- | ±--- |
| ANGULAR ± 3° | |

DRAFT WHERE APPLICABLE MUST REMAIN WITHIN DIMENSIONS

| DIMENSION STYLE | |
|-----------------|---------------|
| MM ONLY | |
| DRAWN BY | DATE |
| JKACHL I | 1991/07/02 |
| CHECKED BY | DATE |
| JNG | 1991/07/09 |
| APPROVED BY | DATE |
| YTYAP | 1991/07/09 |
| MATERIAL NO. | DOCUMENT NO. |
| SEE TABLE | SD-87340-**01 |

SCALE NTS DESIGN UNITS METRIC

THIRD ANGLE PROJECTION

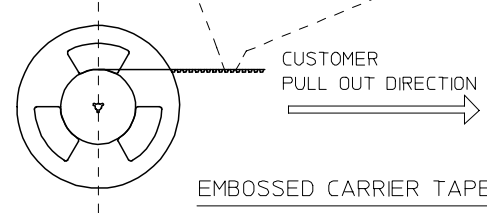
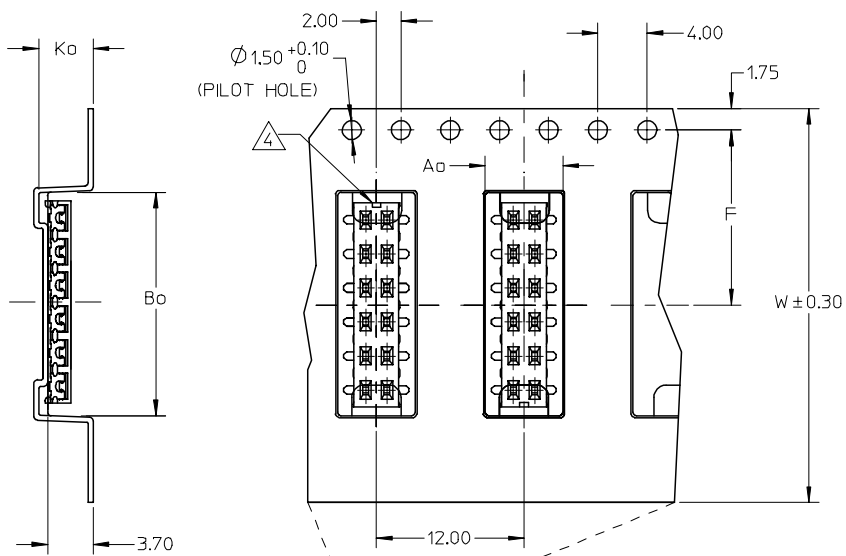
SALES DRAWING
 MGRID, VLPR II, DUAL ROW
 2MM, T/ENTRY RECEPT, SMT

MOLEX INCORPORATED

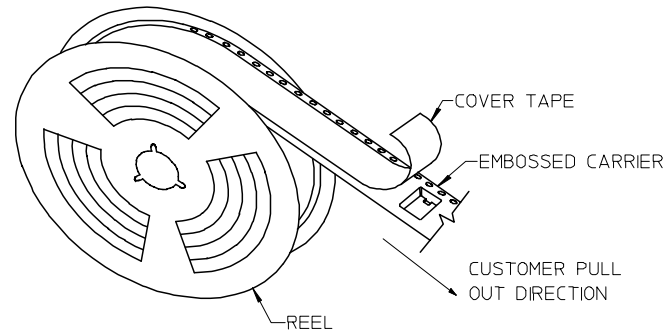
SHEET NO. 1 OF 2

THIS DRAWING CONTAINS INFORMATION THAT IS PROPRIETARY TO MOLEX INCORPORATED AND SHOULD NOT BE USED WITHOUT WRITTEN PERMISSION

| 5 | 4 | 3 | 2 | 1 | | | | |
|------------------|--------------------|----------|----------------|------|-------|-------|-------|------|
| PART NO. IN TUBE | PART NO. TAPE/REEL | CKT SIZE | PLATING OPTION | Ao | Bo | F | W | Ko |
| 87340-1014 | 87340-1019 | 10 | TIN | 6.70 | 10.40 | 11.50 | 24.00 | 5.30 |
| 87340-1613 | 87340-1618 | 16 | TIN | 6.60 | 16.30 | 11.50 | 24.00 | 4.40 |



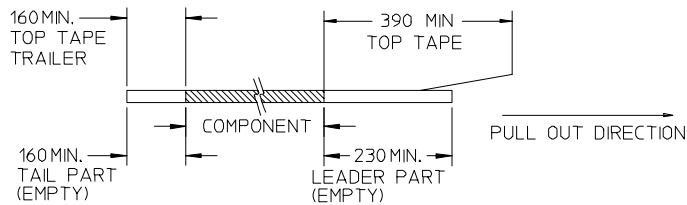
EMBOSSED CARRIER TAPE WITH DIMENSIONS



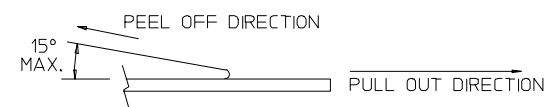
TAPE AND REEL ASSEMBLY SHOWN IS FOR ILLUSTRATION ONLY.

NOTES:

1. LEADER AND TRAILER TAPE



2. PEELING OFF FORCE OF THE TOP TAPE: 20-80gf.
(PEELING DIRECTION AS SHOWN IN FOLLOWING FIGURE)



3. PACKAGING STANDARD IS AS PER EIA-481.

4. NO FIX ORIENTATION OF ASSEMBLY PART IN T&R.

5. TAPE & REEL QUANTITY : 1000 PCS / REEL

PDR No. : S-001004-00-00
 EC NO: S2006-0170
 DRWN: LO/IAO 2005/08/30
 CHKD: BOKOK 2005/08/30
 APPR: PTLIM 2005/09/08

| QUALITY SYMBOLS | DESCRIPTION |
|-----------------|-------------|
| ▽=0 | |
| ▽=0 | |
| J2 | REV |

| GENERAL TOLERANCES (UNLESS SPECIFIED) | |
|---------------------------------------|-------|
| mm | INCH |
| 4 PLACES ± --- | ± --- |
| 3 PLACES ± --- | ± --- |
| 2 PLACES ± 0.20 | ± --- |
| 1 PLACE ± --- | ± --- |
| ANGULAR ± 3 ° | |

DRAFT WHERE APPLICABLE MUST REMAIN WITHIN DIMENSIONS

| DIMENSION STYLE | |
|-----------------|--------------|
| SCALE | DESIGN UNITS |
| MM ONLY | NTS |
| NTS | METRIC |

| THIRD ANGLE PROJECTION | |
|------------------------|------------|
| DRAWN BY | DATE |
| JKACHL I | 1991/07/02 |
| CHECKED BY | DATE |
| JNG | 1991/07/09 |
| APPROVED BY | DATE |
| YTYAP | 1991/07/09 |
| MATERIAL NO. | |
| DOCUMENT NO. | |
| SHEET NO. | |

SALES DRAWING
 MGRID, VLPR II, DUAL ROW
 2MM, T/ENTRY RECEPT, SMT
 MOLEX INCORPORATED
 SD-87340-**01
 2 OF 2

THIS DRAWING CONTAINS INFORMATION THAT IS PROPRIETARY TO MOLEX INCORPORATED AND SHOULD NOT BE USED WITHOUT WRITTEN PERMISSION